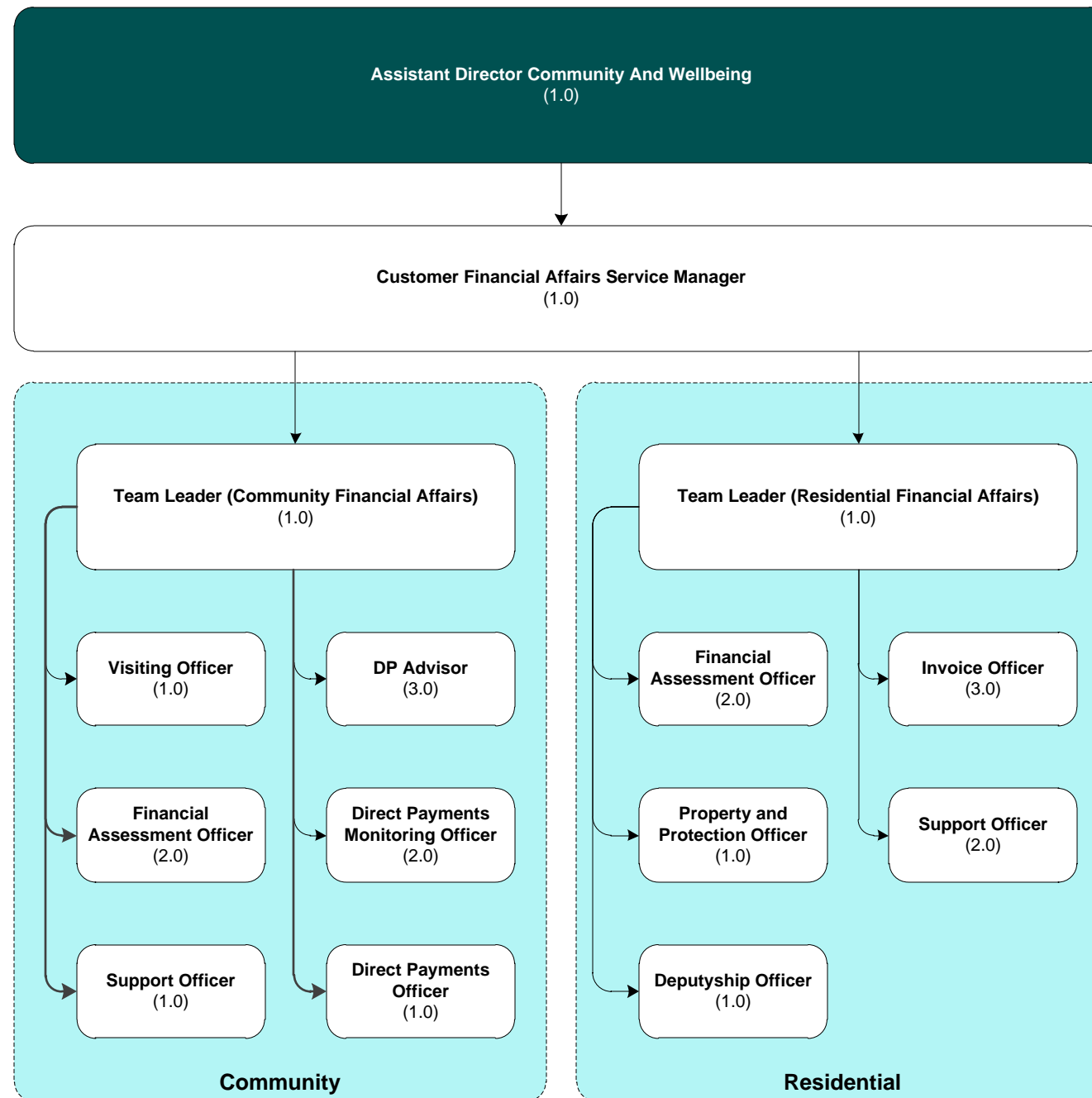


Customer Care Summary

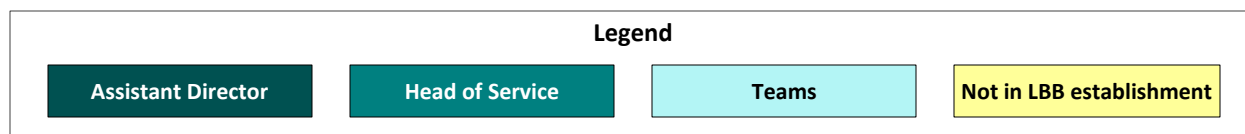
Role	FTE
Communications Lead	1.00
Engagement Officer	1.00
Service Manager	1.00
Total	3.00

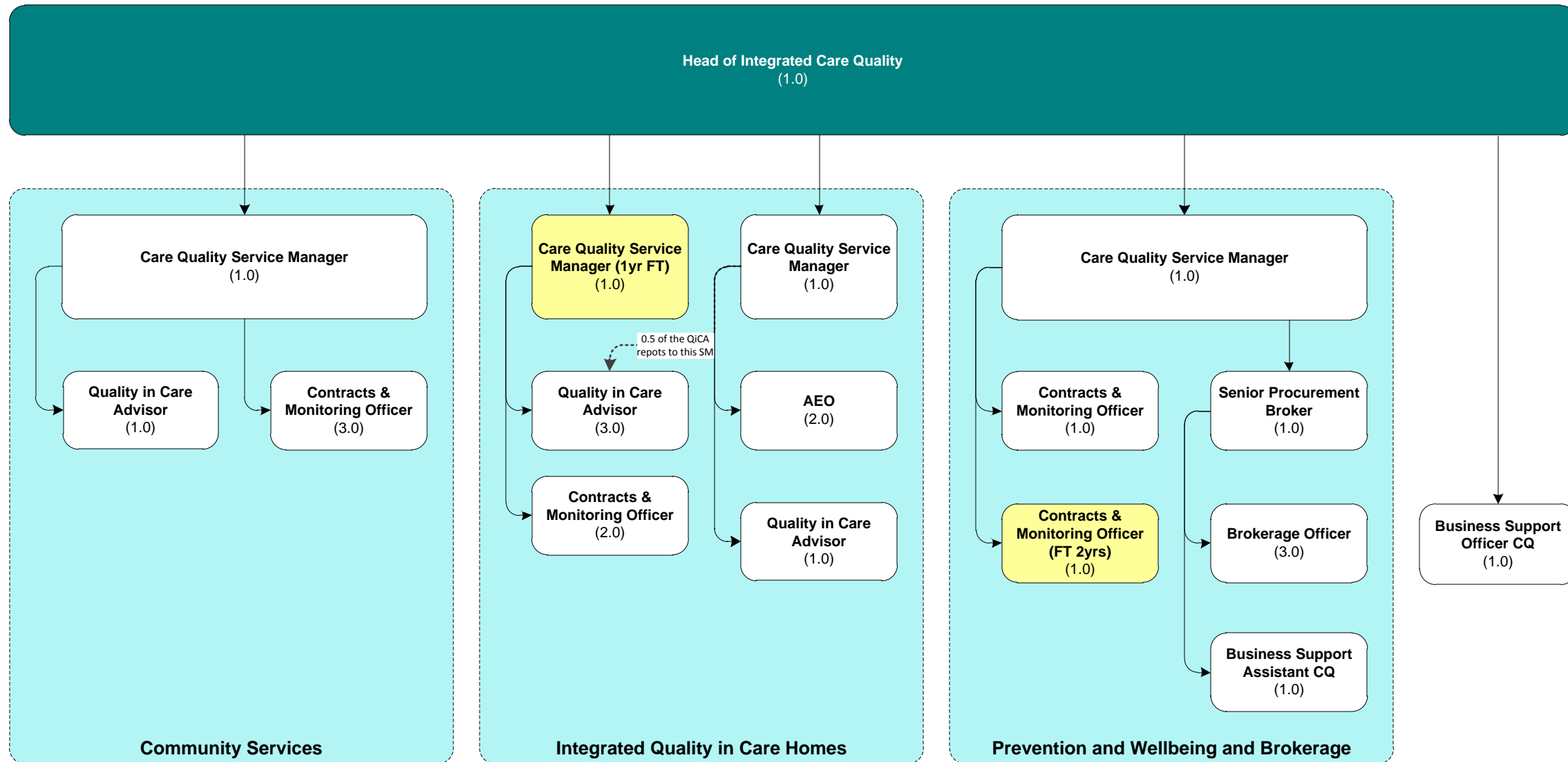




Customer Financial Affairs Summary

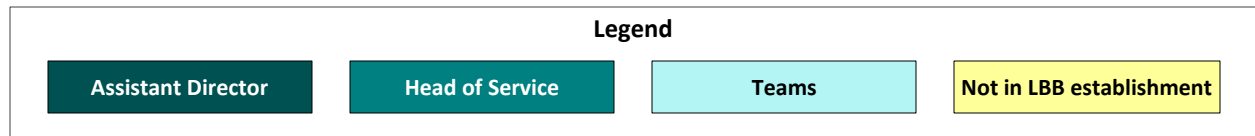
Role	FTE
Direct Payments Advisor	3.00
Direct Payments Officer	3.00
Deputyship Officer	1.00
Financial Assessment Officer	4.00
Invoice Officer	3.00
Property and Protection Officer	1.00
Support Officer	3.00
Service Manager	1.00
Team Leader	2.00
Visiting Officer	1.00
Total	22.00

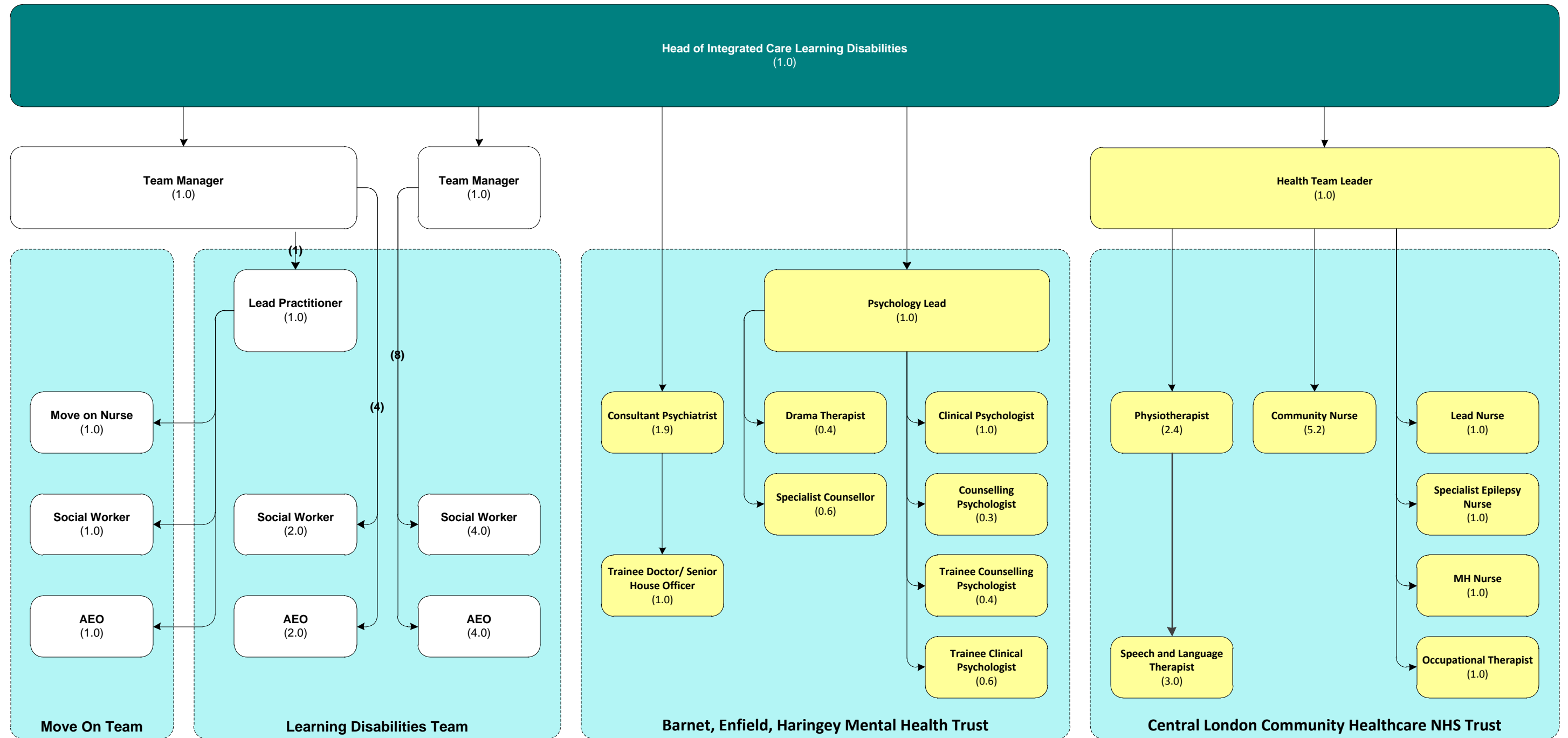




Integrated Care Quality Summary

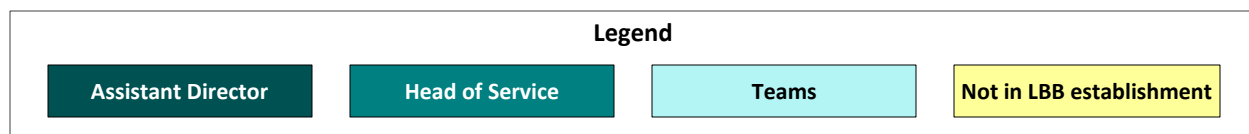
Role	FTE
Assessment and Enablement Officer	2.00
Brokerage Officer	3.00
Business Support Assistant (CQ)	1.00
Business Support Officer (CQ)	1.00
Care Quality Service Manager	3.00
Contracts and Monitoring Officer	6.00
Head of Service	1.00
Quality in Care Advisor	5.00
Senior Procurement Broker	1.00
Total	23.00

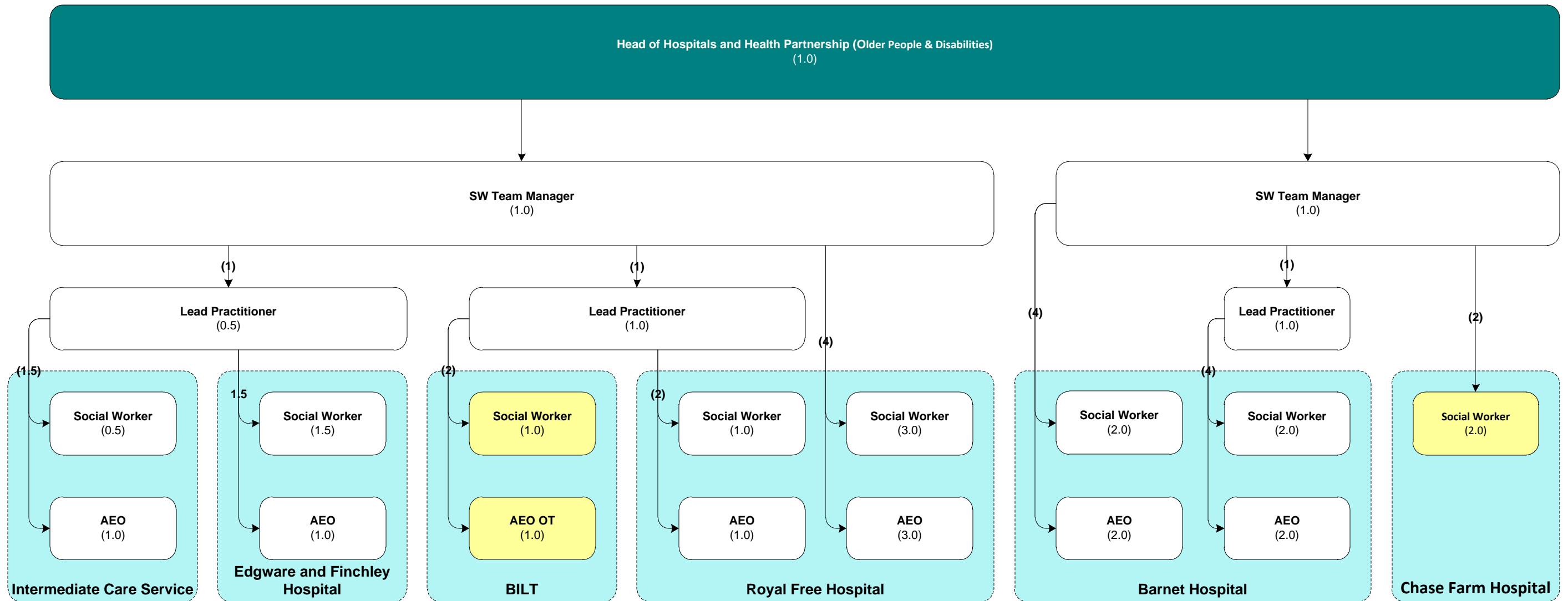




Integrated Care Learning Disabilities Summary

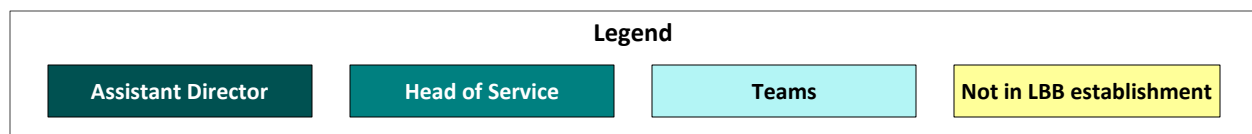
Role	FTE
Assessment and Enablement Officer	7.00
Head of Service	1.00
Lead Practitioner	1.00
Move on Nurse	1.00
Team Leader	2.00
Social Worker	7.00
Total	21.00



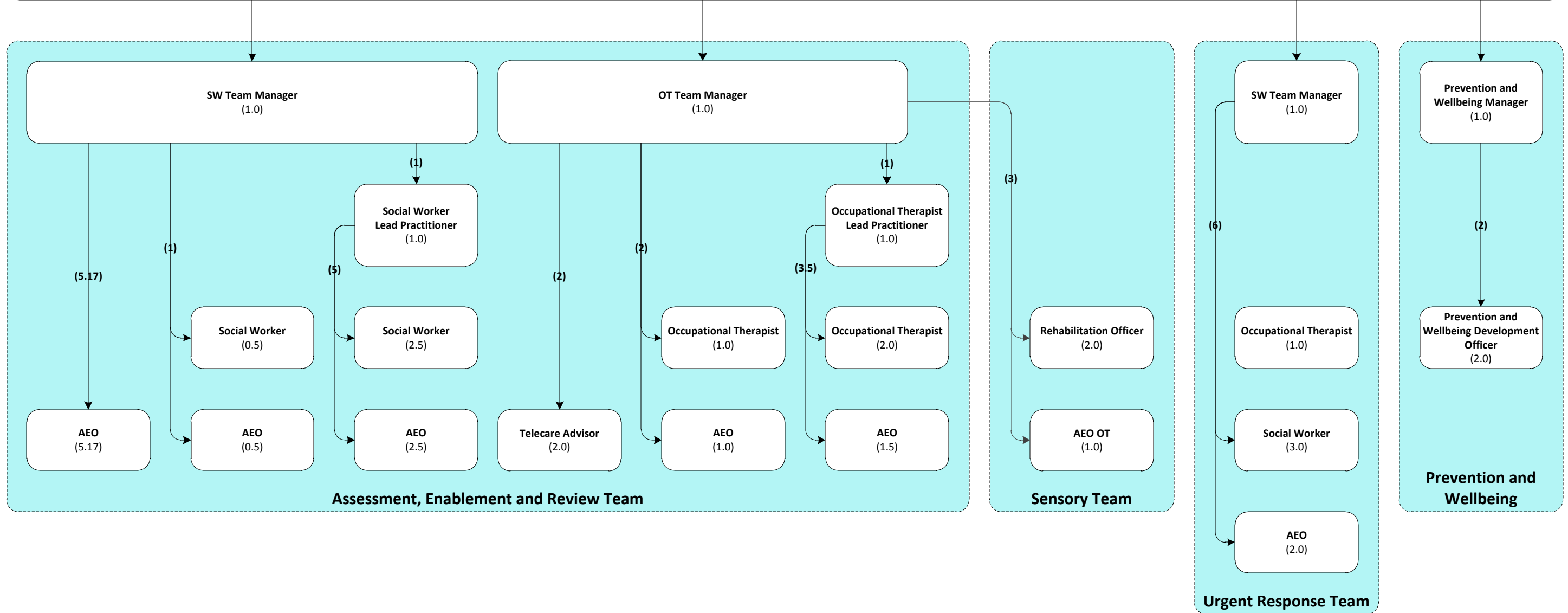


Hospitals and Health Partnership (Older People & Physical Disabilities) –Summary

Role	FTE
Assessment and Enablement Officer	11.00
Head of Service	1.00
Lead Practitioner (SW)	2.50
Social Worker (establishment only)	10.00
Team Leader (SW)	2.00
Total	26.50

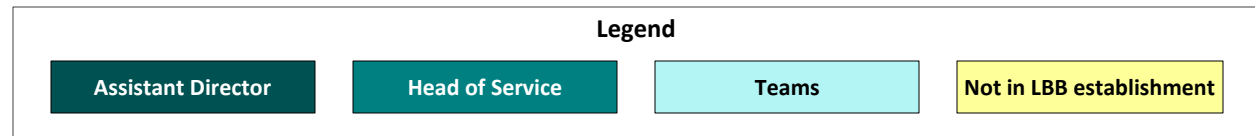


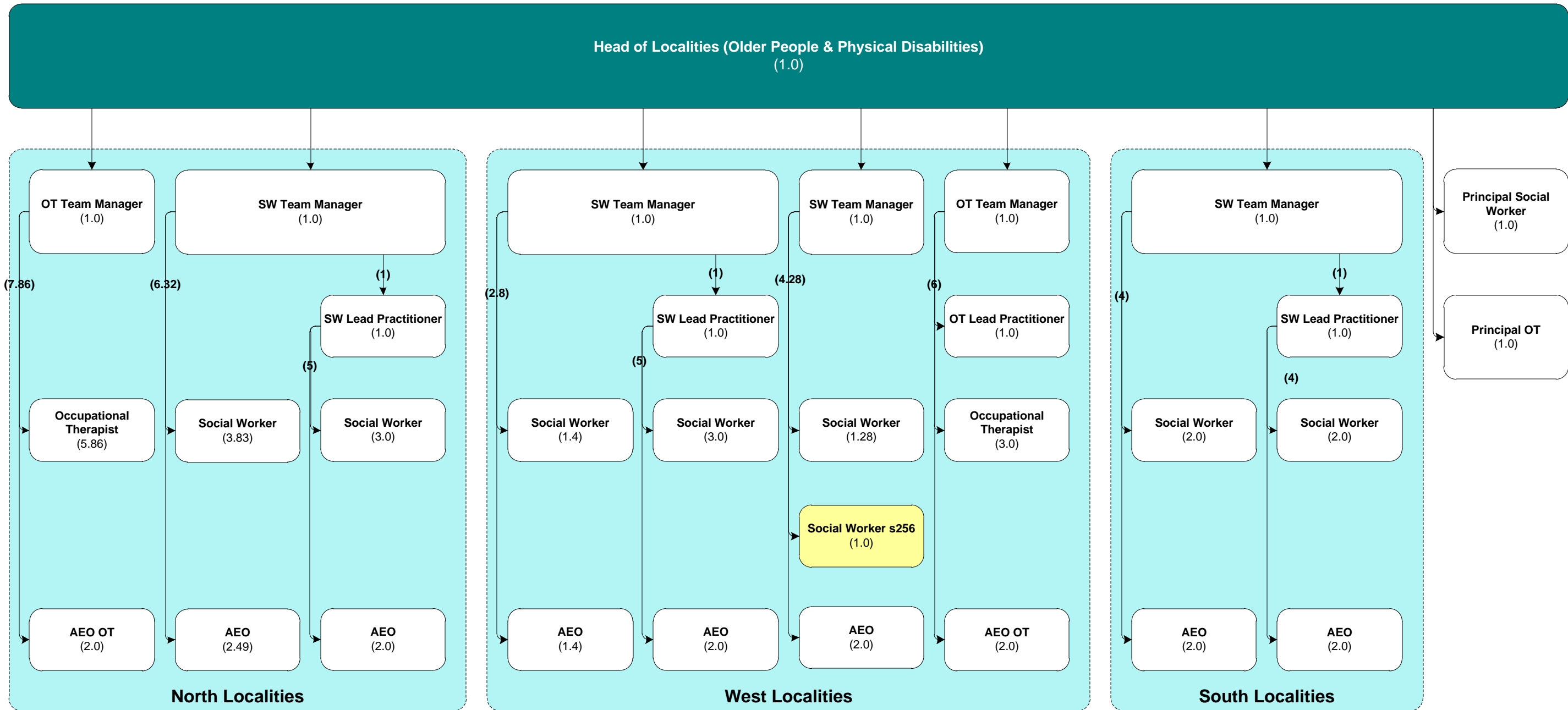
Head of Access, Enablement and Review (Older People and Physical Disabilities)
(1.0)



Access, Enablement and Review (Older People & Physical Disabilities) Summary

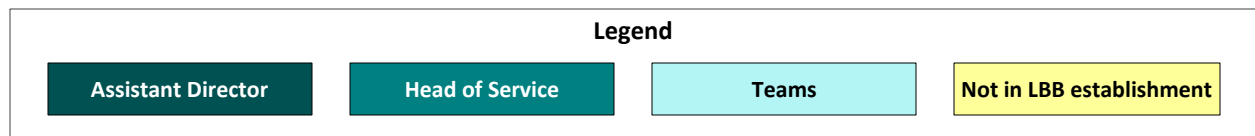
Role	FTE
Assessment and Enablement Officer	13.67
Head of Service	1.00
Lead Practitioner	2.00
Occupational Therapist	4.00
Prevention and Wellbeing Development Officer	2.00
Prevention and Wellbeing Manager	1.00
Rehabilitation Officer	2.00
Social Worker	6.00
Telecare Advisor	2.00
Team Manager	3.00
Total	36.67

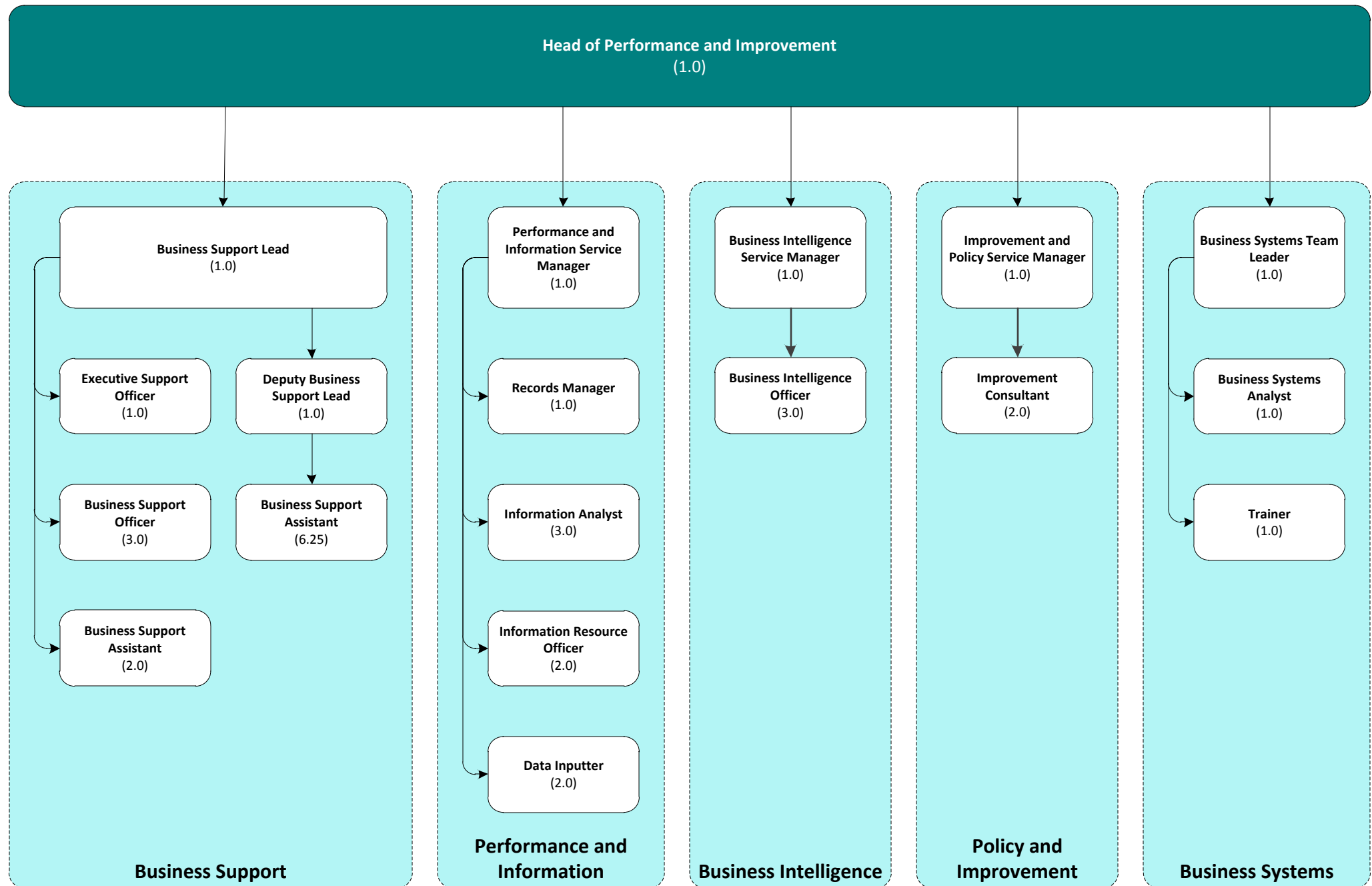




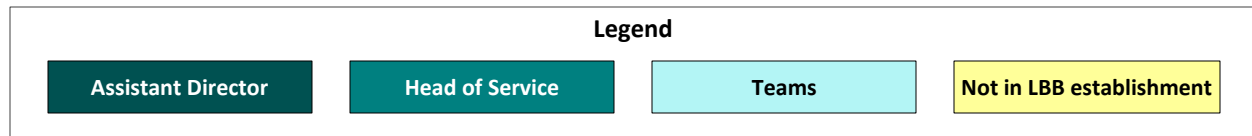
Localities (Older People & Physical Disabilities) Summary

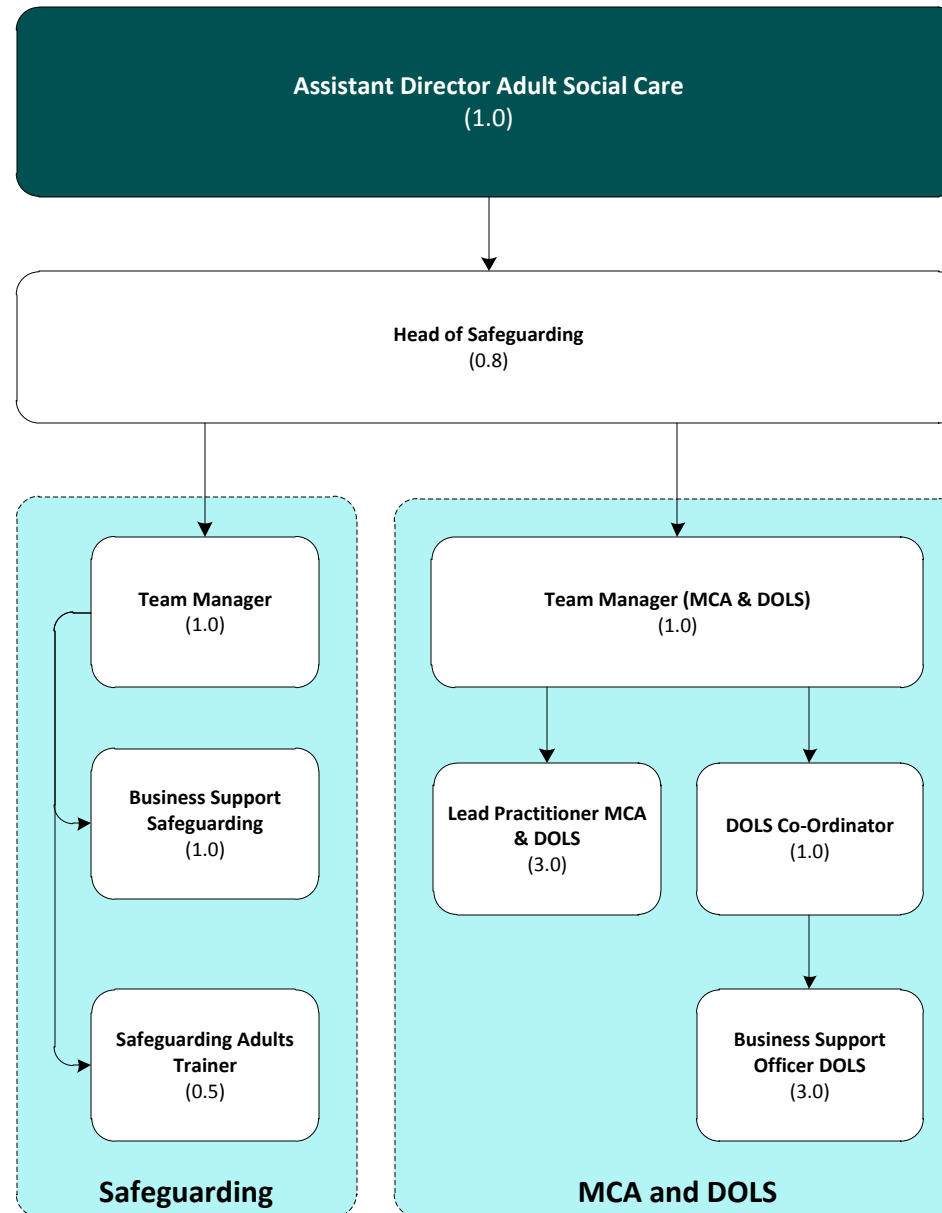
Role	FTE
Assessment and Enablement Officer	17.89
Head of Service	1.00
Lead Practitioner	4.00
Occupational Therapist	8.86
Principal Occupational Therapist	1.00
Principal Social Worker	1.00
Social Worker (exc. s256 SW)	17.52
Team Leader	6.00
Total	57.27





Performance and Improvement Summary	
Role	FTE
Business Intelligence Officer	3.00
Business Support Assistant	8.25
Business Support Officer	3.00
Business Support Lead	1.00
Business Systems Analyst	1.00
Data Inputter	2.00
Deputy Business Support Lead	1.00
Executive Support Officer	1.00
Head of Service	1.00
Improvement Consultant	2.00
Information Analyst	3.00
Information Resource Officer	2.00
Records Manager	1.00
Service Manager	3.00
Team Leader	1.00
Trainer	1.00
Total	33.25

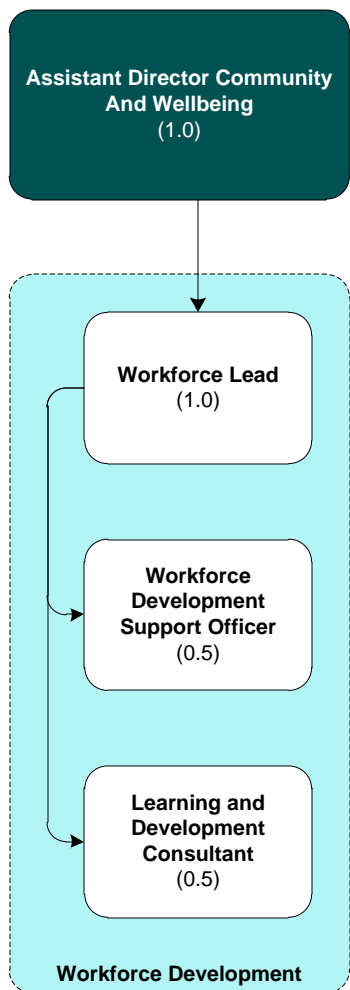




Safeguarding Adults Summary	
Role	FTE
Business Support	1.00
Business Support Officer (DOLS)	3.00
DOLS Coordinator	1.00
Head of Safeguarding	1.00
Lead Practitioner MCA DOLS	3.00
Safeguarding Adults Trainer	0.50
Team Leader (MCA & DOLS)	1.00
Team Leader / Principal SW Safeguarding	1.00
Total	10.50

Legend

- Assistant Director
- Head of Service
- Teams
- Not in LBB establishment



Workforce Development Summary

Role	FTE
Workforce Lead	1.00
Workforce Development Consultant	0.50
Workforce Development Support Officer	0.50
Total	2.00

